



2008 – 2011 Partnership Plan to address Crime, Drugs and Anti-Social Behaviour in Barnsley

The Barnsley Safer Communities Partnership is the Crime and Disorder Reduction Partnership for Barnsley, and one of the delivery partnerships for the Local Strategic Partnership, One Barnsley.

As the nature of the work of the Partnership is constantly developing, please ensure you are working with the most up-to-date version of this document by either contacting the Partnership on 01226 774950 or by checking the website: saferbarnsley.gov.uk.

Version 1.0 Published April 2008

Contents

- 1.0 Introduction
 - 1.1 Background to the Partnership Plan
 - 1.2 The Safer Communities Partnership Executive Committee
 - 1.3 The Four-Strand Approach
 - 1.4 Values and Beliefs
 - 1.5 Strategic Links
 - 1.6 Delivery Mechanisms
 - 1.7 The Strategic & Operational Approach

- 2.0 Management and Delivery of the Plan
 - 2.1 Use of Resources
 - 2.2 Risk Management
 - 2.3 Performance Management
 - 2.4 Community and Voluntary Sector Role

- 3.0 Organisations and Structures
 - 3.1 Responsible Authorities
 - 3.2 Co-operating Authorities and Invitees to Participate
 - 3.3 Community Safety Services

- 4.0 Strategy to Address Crime, Drugs and Anti-Social Behaviour
 - 4.1 Anti-Social Behaviour
 - 4.2 Volume (Acquisitive) Crime
 - 4.3 Drug and Alcohol Misuse
 - 4.4 Hate and Hidden Crime
 - 4.5 Domestic Abuse and Sexual Violence
 - 4.6 Community Engagement and Participation
 - 4.7 Communication to Improve Public Reassurance
 - 4.8 Offender Management
 - 4.9 Youth Offending

- Annex - Glossary

1.0 Introduction

1.1 Background to the Partnership Plan

The Police and Justice Act 2006 introduced new statutory requirements for Crime and Disorder Reduction Partnerships to undertake an annual Strategic Assessment of crime, drugs and anti-social behaviour, consult on the findings of this assessment and use the findings of this process to inform a 'Partnership Plan' for delivery in the subsequent year.

This document hereon in is referred to as the 'Partnership Plan'. It follows on from the Strategic Assessment document, a summary of which was published and consulted upon in January 2008. It reflects the priorities identified through this process and includes a strategy for tackling crime and disorder in the area.

This plan covers a three year period from 2008-2011 although it will be reviewed on an annual basis in line with statutory requirements. This will allow us to reflect any new priorities emerging from strategic assessments and consultation with communities.

1.2 The Safer Communities Partnership Executive Committee

The ownership for this process rests with the Safer Communities Partnership Executive Committee. This is the statutory Crime and Disorder Reduction Partnership (CDRP) Strategy Group for Barnsley, and includes senior representation from the responsible authorities, and other partner agencies including the voluntary and community sector with a role in tackling crime, drugs and anti-social behaviour in our communities.

Members of the Committee are defined in the Committee's terms of reference as 'representatives of responsible or co-operating bodies with the ability to commit resources and/or direct service delivery, to positively contribute towards the delivery of the Partnership Plan, or invitees to participate in the Committee process'.

The positions within partner agencies as falling within this definition are identified as follows:

Senior Officer Community Safety Spokesperson - (Executive Director, Customer Services and Neighbourhoods Directorate)	Barnsley MBC
District Commander	South Yorkshire Police
Nominated Representative	South Yorkshire Fire Authority
Nominated Representative	South Yorkshire Police Authority
Nominated Representative	Barnsley Primary Care Trust

Elected Community Safety Spokesperson	Barnsley MBC
Assistant Chief Officer	South Yorkshire Probation Service
Barnsley Group Manager	South Yorkshire Fire & Rescue Service
Non-Executive Director	NHS
Executive Director, Adult Services	Barnsley MBC
Nominated Representative, Children, Young People and Families	Barnsley MBC
Assistant Director, Strategic Housing	Barnsley MBC
Nominated Representative	Berneslai Homes
Nominated Representative	Community & Voluntary Sector
Director	Safer Communities Partnership
Chairperson	Youth Offending Team Board
Chairperson	Drug and Alcohol Action Team

In addition, the Executive Committee is supported by a Community Safety Management Team which includes the following officers.

Director	Safer Communities Partnership
Local Authority Liaison Officer	South Yorkshire Police
Assistant Director Community Safety	Barnsley MBC
Youth Offending Team Manager	Barnsley MBC
Drug and Alcohol Action Team Manager	Barnsley MBC
Head of Community Safety Strategy and Performance	Barnsley MBC

Together, these representatives collectively share responsibility for the delivery of the Plan.

1.3 The Four-Strand Approach

The Executive Committee adopts a four strand approach to deliver the Partnership Plan, as follows:

- Prevention through physical and social measures, including educational approaches and diversionary activities.
- Enforcement.
- Rehabilitation of offenders including perpetrator support to positively change behaviour.
- Support for victims and witnesses, including the families of those involved in crime.

1.4 Values and Beliefs

The Executive Committee has the following values and beliefs;

- Crime and the fear of crime seriously detract from the quality of life in, and the social and economic well-being of, our community.
- Anti-social behaviour, can be intimidating, and contributes to the fear of crime.
- Everyone in the community has a part to play in addressing crime, the fear of crime and victimisation and we believe that the Partnership provides the best opportunity to encourage everyone to contribute to the solution.
- The causes of crime are complex, but alienation from the community's accepted values - whether through exclusion, boredom, deprivation or social dysfunction - is a major contributing factor.
- Working within neighbourhoods to build trust, respect and increased ownership is essential to the successful delivery of the Partnership Plan.
- The Partnership also contributes to the 'clean' and 'green' agendas to improve the public realm and thereby assist in the reduction of fear of crime.
- Personal and collective social responsibility is fundamental to the long-term solution.
- While important in the short-term, physical security measures alone do not provide a viable long-term solution to the problems of crime.
- To work towards a balanced approach of enforcement, prevention, rehabilitation, restorative justice and support for victims and offenders.
- To become a clear focus, within the community, for community safety activity, and to keep community safety at the forefront of public attention.
- To work together to improve communication, pool resources, share ideas and information and give mutual support and coherence to community safety activity.
- To engage the whole community in tackling crime, fear of crime and victimisation.
- To work with vulnerable sections of the community and the victims of crime, to help them overcome the impact of crime on their lives.
- To encourage and support local initiatives in accordance with these values.
- To encourage and support social measures targeted at children & young people.
- To understand the links between area based issues, social & economic isolation and community empowerment.

1.5 Strategic Links

1.5.1 The Sustainable Communities Strategy

The Sustainable Community Strategy sets out the long-term strategic vision for Barnsley. In doing so it states what we are going to do, why we need to do it and what will change as a result of our actions. The Sustainable Communities Strategy is coordinated through One Barnsley, Barnsley's Local Strategic Partnership.

The One Barnsley Board is the decision making body for the Local Strategic Partnership and is supported by a number of Delivery Partnerships. These Delivery Partnerships provide a place for agencies to meet, focus discussion and formulate action on relevant issues. One of these Delivery Partnerships is the Safer Communities Partnership, which is also the CDRP for Barnsley, and the Partnership with the responsibility for addressing crime, drugs and anti-social behaviour.

The Local Area Agreement is the 'delivery document' for the Sustainable Communities Strategy. It sets out, in greater detail, the strategic priorities for Barnsley and how these will be jointly tackled.

Clearly, this Partnership Plan needs to reflect the strategic direction and priorities contained in both the Sustainable Communities Strategy and the Local Area Agreement. The Partnership Plan provides the detail of how the vision will be achieved and the strategic priorities met.

The Sustainable Communities Strategy is structured around Strategic Outcomes. The Strategic Outcome of relevance to this Partnership Plan is as follows:

Improving the quality of life in our neighbourhoods by protecting the community from crime, disorder and other risks to their safety.

The Priorities contained in the Sustainable Communities Strategy that contribute to the achievement of this Strategic Outcome, and are of relevance to this Partnership Plan, are as follows:

- Reducing crime and anti-social behaviour
- Improving public perception of crime
- Assault
- Arson
- Reducing substance misuse
- Tackling hate and hidden crime
- Offender management

1.5.2 The Local Area Agreement

The Local Area Agreement includes a number of 'improvement priorities', drawn from the National Indicator Dataset, and reflecting the areas where enhanced progress is most required. These improvement priorities each have accompanying delivery targets. The community safety related improvement priorities contained in our Local Area Agreement are as follows:

- NI17 – Perceptions of Anti-Social Behaviour
- NI33 – Arson incidents
- NI40 – Drug users in effective treatment
- NI18 – Adult offending rates for those under probation supervision
- NI20 – Assault with injury

1.5.3 Links to National Strategies

The Plan is complementary to the following national strategies.

- National Respect Action Plan
- National Community Safety Plan
- National Offender Management Programme
- National Supporting People Strategy
- National Guidance on PPO/DIP
- Home Office Cross Departmental Action Plan on Sexual Violence
- Government's Safety and Justice Paper 2003 and Domestic Violence – A National Report 2005
- Domestic Violence, Crime and Victims Act, 2004
- Children Act 2004
- Adoption & Children's Act 2002
- Every Child Matters
- Change for Children 2004
- National Service Framework for Children, Young People and Maternity Services 2004
- Safeguarding Children in Education
- PSA Delivery Agreement 23: Make Communities Safer
- PSA Delivery Agreement 25: Reduce the harm caused by Alcohol and Drugs
- National Drugs Strategy
- National Alcohol Harm Reduction Strategy
- National Community Safety Plan 2008-11 (including National Policing Plan)
- Cutting Crime – A New Partnership 2008-11
- Saving Lives. Reducing Harm. Protecting the Public 2008-11 (Action Plan for Tackling Violence)

1.5.4 Links to Local Strategies

The Plan is complementary to the following local strategies.

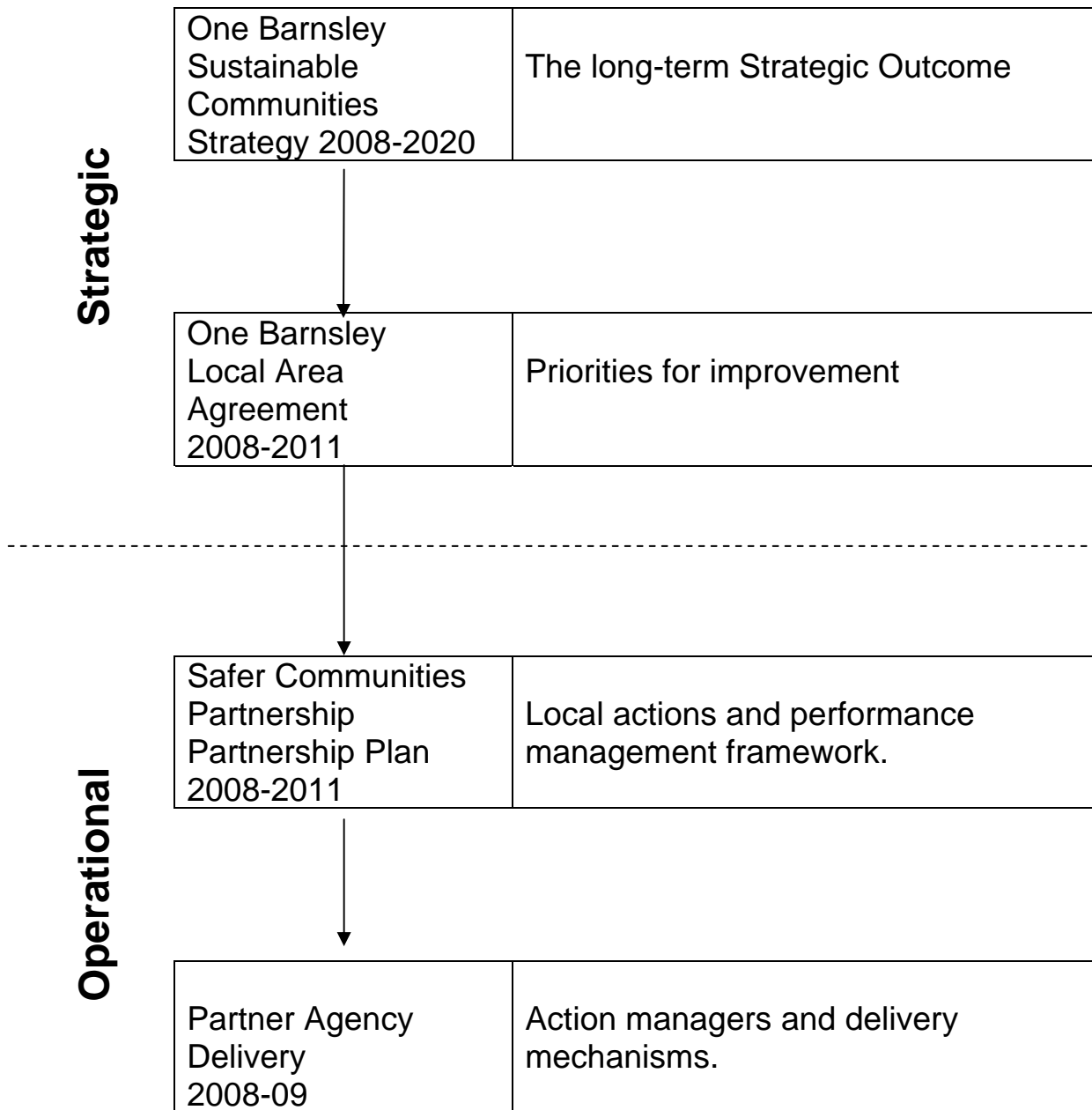
- District Policing Plan
- Barnsley Youth Justice Plan
- Barnsley Children's Plan
- DAAT Strategy
- Barnsley Alcohol Harm Reduction Strategy
- BMBC Proposed Service Equality Priorities 2008-11

1.6 Delivery Mechanisms

In addition to the Executive Committee CDRP Strategy Group, there are a number of specific groups that lead on the delivery of specific aspects of the Plan. These are:

- Domestic Burglary Group
- Vehicle Crime Group
- Alcohol Task Group
- Off-Road Vehicle Nuisance Group
- Drug and Alcohol Action Team (DAAT) Board
- Safer Neighbourhood Team (SNT) Board
- Youth Offending Team (YOT) Board
- Domestic and Sexual Abuse Forum
- Multi-Agency Panel for Racial Harassment (MAP)
- Barnsley Partnership Against Transphobia and Homophobia (B-PaTH)
- Domestic Abuse Multi-Agency Risk Assessment Conferences (MARAC)
- Safer Communities Forum
- Multi-Agency Action Groups (MAAGs)
- Crime and Safety Sub-Groups (CSSGs)
- Barnsley Offender Management Forum (BOMF)
- Local Offender Management Panel (LOMP)
- Drug Intervention Panel

1.7 The Strategic and Operational Approach



2.0 Management and Delivery of the Plan

2.1 Use of Resources

Each Partner Agency identified in section 3.1 provides operational resources that contribute to the delivery of this Plan. In addition, the Services identified in section 3.2 are resourced by pooled budgets and/or seconded personnel. The commitment of financial and other resources is made by the representatives that comprise the Safer Communities Partnership Executive Committee. This Committee is also responsible for the oversight of a pooled partnership budget, drawn from the Local Area Agreement Area Based Grant, which is allocated to achieve the delivery of this Plan.

2.2 Risk Management

The risks to partnership working are identified and held on BMBCs Risk Management database, Riskgen. These are:

- 1) The dependency of Community Safety Partnership Structures on external grant funding and the year-on-year nature of this.
- 2) Meeting the statutory functions of a CDRP, such as production of a Partnership Plan.
- 3) The facilitation and effective delivery of partnership working.
- 4) A major impact on a single agency, such as a restructure, that would impact upon the operation of the CDRP.

2.3 Performance Management

The Safer Communities Partnership Executive Committee has responsibility for the delivery and performance management of the Partnership Plan. A detailed performance management framework will be developed to monitor the delivery of the partnership plan. Regular performance updates will be provided to the Executive Committee on an exception basis. Reports will highlight both good and poor performance ensuring the identification of best practice and consideration for remedial action where necessary.

The performance management framework details the strategic outcomes for the Safer Communities Partnership. These outcomes link directly into the Local Area Agreement, Sustainable Communities Plan, and the performance requirements and targets of individual partner agencies. This ensures, where possible, a streamlined approach to performance management and the alignment of targets across partner agencies.

At an operational level the performance management framework monitors the delivery of themed action plans. These are the activities and outputs that will contribute to the achievement of the objectives of the Partnership Plan.

The performance management framework is the basis for the annual strategic assessment. It facilitates data collection, allows for the early identification of crime and disorder trends, and provides a basic evaluation of projects undertaken. It is the process for commissioning more detailed analysis and evaluation. As such, the performance management framework supports the continuous process that is essential for the timely delivery of the strategic assessment.

2.4 Community and Voluntary Sector Role

The Community and Voluntary Sector will play a crucial role in the delivery of this Plan. The Safer Communities Partnership has a long history of community and voluntary sector involvement at both an operational and strategic level. This is vital for us to make decisions and provide services that best meet the needs of the different communities we serve. Partnership working and community involvement are at the heart of our work. The Safer Neighbourhood Teams are based in the communities they serve and each have strategies of engagement based around the Three Tier Model of Engagement. This structure increases the connection between neighbourhood community safety issues and policing resources. Community Priorities are obtained and delivered through this structure. The structure is explained in further detail in the Community Engagement and Communication section, it details how we plan to engage and involve our communities over the next three years.

3.0 Organisations and Structures

3.1 Responsible Authorities

3.1.1 Barnsley Metropolitan Borough Council



Barnsley Metropolitan Borough Council (BMBC) provides financial support to the services that work together in Barnsley to address crime, drugs and anti-social behaviour. A dedicated Community Safety Service was created in 2008 bringing together a range of resources into a single dedicated structure. In addition, many Council Departments have a role to play in reducing Crime and Disorder through the delivery of their day to day services.

Further information can be found at: www.barnsley.gov.uk or telephone 01226 770770.

3.1.2 South Yorkshire Fire & Rescue Authority



The Fire and Rescue Authority has statutory responsibilities laid down in the Fire and Rescue Services Act 2004, The Civil Contingencies Act 2004 and The Local Government Act 1999 to provide an effective, economic and efficient Fire and Rescue Service. It is an independent body made up of 12 local Councillors drawn from the district councils of South Yorkshire.

Further information can be found at: www.southyorks.gov.uk or telephone 01226 772800.

3.1.3 South Yorkshire Police Authority



The Police Authority has certain statutory duties to perform that are set out in legislation. Their most important function is to secure the maintenance of an efficient and effective police service for the public of South Yorkshire.

It is made up of 17 Members consisting of nine Councillors drawn from the elected Members of Local Authorities in Barnsley, Doncaster, Rotherham and Sheffield; three local Lay Justices nominated by the magistrates' benches within the county; and five independent members of the public selected following application to serve on the Authority.

Further information can be found at: www.southyorks.gov.uk or telephone 01226 772800.

3.1.4 Barnsley NHS Primary Care Trust (PCT)



The primary responsibility of the PCT is to improve the health of the local people by promoting healthy lifestyles and providing care in the community and ensuring that appropriate hospital services are available.

The Trust is given funding to plan and deliver health services and it spends approximately £300 million per year on health care for the people of Barnsley. It places contracts with doctors, dentists, pharmacists and opticians, community service providers and hospital services. Most services are provided in primary care and community settings and this proportion is increasing.

Further information can be found at www.barnsleypct.nhs.uk or telephone 01226 730000.

3.1.5 South Yorkshire Police



South Yorkshire Police are working with local authorities and other partners to make neighbourhoods safer. Through Safer Neighbourhood Teams they are tackling local issues which matter most in communities. Response teams also exist to respond 24 hours a day to emergency calls that need an immediate response.

The Barnsley District Policing Priorities 2008/11 are:

- Improve Public Perception of Crime and Anti-Social Behaviour
- Tackle Crime with a focus on Violent Crime, Domestic Violence and relationship to Alcohol related harm
- Deliver effective and robust Offender Management
- Protect vulnerable communities and deliver a robust partnership enhanced response to public protection
- Improve Confidence and Satisfaction
- Deliver effective partnership enhanced Neighbourhood Policing that addresses local priorities

Further information can be found at: www.southyorkshirepolice.uk or telephone 01226 2202020 (999 in emergencies).

3.2 Co-operating Authorities and Invitees to Participate

3.2.1 South Yorkshire Fire and Rescue



South Yorkshire Fire and Rescue work in partnership with communities and agencies for a Safer South Yorkshire by reducing the risks that cause emergencies, dealing effectively with emergencies when they happen, building public confidence in the fire and rescue service, working effectively with local partners and continually developing resources to meet changing needs. Barnsley District are particularly trying to develop links and partnerships so they can increase their pro-active and preventative side alongside the responsive side.

Further information can be found at www.syfire.gov.uk or telephone 0114 2532266 (999 in emergencies).

3.2.2 National Probation Service



The Probation Service is a Criminal Justice Agency that works with people who have committed crimes, before and after they are sentenced in court. They monitor the behaviour of offenders and the risks they pose to themselves and others, while overseeing their punishment and rehabilitation. The majority of their caseload are men and women given community sentences by the court but they also work closely with colleagues in the Prison Service to manage the resettlement of prisoners released from custody.

Further information can be found at www.syps.org.uk or telephone 0114 2766911.

3.2.3 Berneslai Homes



Berneslai Homes is an arms length management organisation (ALMO) that is responsible for managing homes on behalf of Barnsley Council. Berneslai Homes manages about 20,500 properties and provides all the landlord services to the council tenants in Barnsley. Berneslai Homes are an independent company committed to working in partnership with BMBC and the communities that they work in, to deliver high quality housing services to local people.

Berneslai Homes is a committed member of the Safer Communities Partnership, Safer Neighbourhood Teams and Community Organisations in trying to tackle crime and anti-social behaviour on their estates.

Further information can be found at www.berneslaihomes.co.uk or telephone Barnsley Connects on 01226 775555.

3.2.4 Barnsley Neighbourhood Watch



Neighbourhood Watch is not just about reducing crime figures, it's also about creating communities who care. The activity of Watch members can foster a new community spirit and a belief in the community's ability to tackle problems. Neighbourhood Watch is therefore a valued and committed member of the Barnsley Safer Communities Partnership.

For further information ring 01226 211814 or 01226 774961.

3.2.5 Crown Prosecution Service (CPS)



The Crown Prosecution Service is the Government Department responsible for prosecuting criminal cases investigated by the police in England and Wales. As the principal prosecuting authority in England and Wales, the CPS is responsible for:

- Advising the Police on cases for possible prosecution.
- Reviewing cases submitted by the Police.
- Where the decision is to prosecute, determine the charge in all but minor cases.
- Preparing cases for court.
- Presentation of cases at court.

In daily operation the CPS work in partnership with Police, Courts, Probation Service, Prison Service, The Witness Service, HM Revenue and Customs, The Serious Fraud Office, The Health and Safety Executive and the Magistrates Court and Crown Courts.

Further information can be found at www.cps.gov.uk or telephone 0114 2298600.

3.2.6 Victim Support



Victim Support works for the rights of victims, witnesses and their families and for greater awareness of the effect of crime. It is an independent national charity whereby trained volunteers based in local schemes/branches contact people following a crime to offer free, confidential support and information. A Witness Service also offered by Victim Support helps victims, witnesses and their families before, during, and after the trial.

Further information can be found at www.victimsupport.org.uk or telephone 01226 243761 for Victim Support and 01226 732525 for the Witness Service.

3.2.7 Voluntary Action Barnsley (VAB)



VAB is Barnsley's Council for Voluntary Service. Since 1978 VAB has supported and developed Barnsley's voluntary and community sector organisations who, in turn, work for the benefit of the local community of Barnsley. There are over 900 voluntary and community groups in Barnsley and over 4,000 volunteers.

VAB has done much to build up voluntary and community organisations, and in the past few years it has seen an enormous expansion in voluntary and community activity. It is for this reason that VAB has continued to provide services that have helped fulfil the needs of the ever-growing sector.

VAB believe in partnership working and are committed to working closely with the statutory, independent and the voluntary and community agencies tackling current issues concerning Barnsley. This includes issues of crime and disorder.

Further information can be found at www.vabarnsley.org.uk or telephone 01226 242726.

3.2.8 Barnsley Chamber of Commerce



Barnsley Chamber of Commerce serves the business communities in and surrounding Barnsley and is the dominant 'voice of business' in the region. It provides business advice and support on many matters including business crime prevention. All sectors of business are vulnerable to crimes such as burglary, theft and criminal damage; the Business Crime Reduction Centre will offer advice and support to reduce these risks.

Further information can be found at www.barnsleychamber.co.uk or telephone 01226 215744.

3.3 Community Safety Services

3.3.1 Community Safety Service

In 2008 a number of services are being amalgamated to form a Partnership Community Safety Service, jointly resourced by South Yorkshire Police, BMBC and Berneslai Homes. This structure will include:

- Nine Safer Neighbourhood Teams (SNT's) structured to be co-terminus with the 'Area Forum' boundaries of BMBC and with the remit of tackling crime and anti-social behaviour in communities and providing public reassurance.
- The Neighbourhood Safety Unit (NSU) which is a specialist unit comprising of the Barnsley Estate Action Team, ASB Enforcement Team, Family Intervention Team and Legal Team for dealing with the most serious cases of anti-social behaviour.
- Dedicated resources for dealing with Hate and Hidden Crimes.
- A Neighbourhood Wardens service to tackle environmental crime.
- Service support including communications and consultation, and performance management/crime analyst specialists.

3.3.2 Barnsley Drug and Alcohol Action Team (DAAT)

Barnsley DAAT is responsible for the local implementation of the National Drug Strategy. Barnsley DAAT Joint Commissioning Group and Young Peoples Substance Misuse subgroup commission drug treatments/interventions to meet local need. The DAAT works closely with local agencies and voluntary groups to provide information, advice and guidance relating to substance misuse to community groups and to young people. The DAAT also leads on the implementation of the Barnsley Alcohol Harm Reduction Strategy.

3.3.3 Drugs Intervention Programme

The Drug Intervention Programme (DIP) delivers a number of services designed to get drug using offenders into treatment and to reduce their drug use and offending once they have accessed treatment. The main services provided by DIP are; drug testing on the point of arrest for acquisitive crime and Drugs Act offences; required access for drug treatment; restriction on bail; rapid access prescribing; through-care and after-care; a 24-hour helpline, and accommodation support.

3.3.4 Youth Offending Team

The main aim of the YOT is to prevent or reduce offending by children and young people aged 10-17. The YOT has a legal duty to supervise and support all young people who have received a final warning from the Police, are on bail or on a community sentence. The team presently incorporates REMEDI which is a Restorative Justice Programme for offenders. Those who are at risk of offending but not yet in the criminal justice system are managed and supported by the Youth Inclusion and Support Panel (YISP). Tailored positive activities for young people are put in place to divert those at risk of offending or becoming involved in Anti-Social Behaviour away from that behaviour.

4.0 Strategy to Address Crime, Drugs and Anti-Social Behaviour

4.1 Anti-Social Behaviour

4.1.1 Background

Anti social behaviour remains a priority concern for residents in Barnsley therefore providing services that tackle actual problems and address negative public perceptions about the extent of anti social behaviour are crucial to achieving improved quality of life for all residents. Contributing towards a negative view of anti social behaviour can be the perception at a local level that general standards of respect and responsibility have broken down. Such perceptions are influenced by a number of factors including views about parental responsibility and feelings that individuals do not necessarily treat one another with due respect.

The cumulative impact of negative perceptions of anti social behaviour and local experiences of problems can lead to increased anxiety and fear amongst residents resulting in a poorer general quality of life. This can be most acutely felt amongst the most vulnerable and isolated individuals within our communities. Focussing local service accessibility and responsiveness to the most vulnerable sections of our communities is vital if overall improvements in quality of life are to be achieved. Moreover ensuring the wider public are involved in identifying and agreeing local service priorities to address their key issues of local concern must be achieved if the council and police are to be recognised locally as dealing effectively with anti social behaviour.

Standards of “acceptable behaviour” remain subjective and inherently difficult to define nevertheless more representative local involvement in determining and defining a consensus of standards will assist the police and council in addressing anti social behaviour more aligned to local need. Allied to this is the clear need to encourage and nurture tolerance for different lifestyles within and between communities in order to enhance feelings of safety, generate greater local cohesion and improve the overall quality of life of the public.

Barnsley continues to be a national leader in the take up and use of tools and powers to address anti social behaviour and has adopted a proactive, innovative and seamless approach towards intervention. The overall approach is reflective of the government’s Respect agenda and clearly corresponds with the principles established across all the programmes of activity supported by Respect. The integrated nature of our services allows appropriate and proportionate use of tools and powers and links very closely to the support and prevention services.

4.1.2 Delivery Objective

Reduce incidences and improve public perceptions of anti-social behaviour (including criminal damage, anti-social behaviour fires and environmental crimes) through an approach of early intervention, intelligence gathering and balanced enforcement.

4.1.3 Structures, Systems & Processes

The areas of structures and processes to be addressed in this area are:

- Review the Corporate and Housing anti social behaviour policies to adapt to more recent challenges and changes.
- Support the development of a Youth Inclusion Strategy and a Prevention Strategy.
- Embed a cross cutting agenda to tackle anti social behaviour across all public service providers and coordinate improvements with emphasis on activities for young people, improving behaviour in and around schools, supporting families, empowering communities and supporting effective enforcement and community justice.
- Link the Young Person's agenda on the MAAGs to the development of Local Area Action Teams by Children's Services.
- Consolidate resilience of services locally to ensure accountability and responsiveness to neighbourhood issues.
- More clearly linking activity to address anti social behaviour to broader sustainability and regenerative strategies with particular emphasis on our most deprived communities.

4.1.4 Action Plan

Utilising the four-strand approach, our approaches and initiatives to be delivered in this area are:

	Action	Lead Responsibility
Prevention	Continued roll out of the Youth Inclusion Support Panel (YISP) as part of the approach for early intervention. SNT referral of individuals discussed at MAAGs is integral to this process.	YOT Manager / AD Community Safety
	Build upon the success of the Safer Schools Partnership at the Dearne by seeking to expand the model to further schools.	YOT Manager
	Develop neighbourhood-based wardens services utilising external grant income to provide intensive environmental interventions in the most challenging communities.	AD Community Safety
	Early identification of neighbourhoods in decline so that cross-cutting solutions can be promptly introduced by different partner agencies.	AD Community Safety / AD Strategic Housing
	Continued use of the LIFE and ASDAN programmes to prevent young people from setting anti-social behaviour fires.	Barnsley District Group Manager SYFRS
	Engagement of the SNT Service with the neighbourhood management initiatives will ensure that community engagement is maximised and prevention opportunities are acted upon.	AD Community Safety
	Utilise SNT resources to have an integral role in neighbourhood based activities for young people (including positive engagement such as Lifestyle, Junior Wardens and Cycling Proficiency) in order to contribute to the wider youth engagement and support strategy.	Ch Insp Partnerships / AD Community Safety
	Improving behaviour in schools through SNT engagement and support from those truant/excluded, and strengthening links and connectivity with schools outside classroom hours.	Ch Insp Partnerships / AD Community Safety
	Prevent the escalation of problems by adopting proactive timely and structured interventions at a neighbourhood level.	Ch Insp Partnerships / AD Community Safety
	Utilise Anti-Social Behaviour concordats in regeneration project areas.	AD Strategic Housing

	Encourage, and where appropriate facilitate, the legal use of off-road vehicles on approved private land and Council land where permission has been granted.	Ch Insp Partnerships / AD Community Safety
	Maintain and further develop specialist interventions (including but not exhaustively: mediation, expectation management)	AD Community Safety, ASB Enforcement Co-ordinator
	Use of the Common Assessment Framework as a tool for measured identification and response to young people or at risk of becoming involved in anti social behaviour.	YOT Manager / AD Community Safety
Enforcement	Maintain and further develop use of tools and powers in respect of environmental based anti-social behaviour (including but not exhaustively: Town & County Planning Act, Cleaner Neighbourhoods Act, Anti-social behaviour Act, Crime & Disorder Act, Police Reform Act)	Ch Insp Partnerships, AD Community Safety, AD Strategic Housing, AD Regulatory Services, ASB Enforcement Co-ordinator.
	Maintain and further develop use of tools and powers in respect of people based anti-social behaviour. (including but not exhaustively: Protection from Harassment Act, Anti-Social Behaviour Act, Crime & Disorder Act, Police Reform Act, Housing Act, Local Government Act)	Ch Insp Partnerships, AD Community Safety, ASB Enforcement Co-ordinator
	Maintain and further develop use of tools and powers in respect of housing based anti-social behaviour. (including but not exhaustively: Housing Act, Anti-Social Behaviour Act, Crime & Disorder Act)	AD Community Safety, AD Strategic Housing, ASB Enforcement Co-ordinator.
	Maintain and further develop policies and procedures in respect of ASB (including but not exhaustively: ASB Corporate and Housing policy & procedure, ASB escalation procedure)	Ch Insp Partnerships, AD Community Safety, ASB Enforcement Co-ordinator
	Maintain and further develop specialist interventions (including but not exhaustively: case management, evidence collection, surveillance)	AD Community Safety, ASB Enforcement Co-ordinator

Rehabilitation of Offenders	Delivery of consistent restorative justice seeking to avoid the criminalization of young people whilst ensuring that anti-social behaviour incidents result in appropriate consequences.	AD Community Safety, AD Regulatory Services, YOT Manager.
	Increase the number of intensive interventions with the most problematic families in the Borough through the Family Interventions Project.	ASB Enforcement Coordinator
Support for Victims and Witnesses	Continued use of reassurance and visibility by SNT resources to provide support to vulnerable persons in society.	Ch Insp Partnerships / AD Community Safety
	Maintain, further develop and embed the identifying and supporting vulnerable victims and witnesses strategy (including but not exhaustively: risk assessments, target hardening, court orientation, protection, professional witnesses, special measures in court)	AD Community Safety, ASB Enforcement Co-ordinator
	Continued support for Neighbourhood Watch and Allotment Watch schemes.	AD Community Safety
	Efficient delivery of environmental cleanliness initiatives to diminish the negative impact on neighbourhoods and residents caused by anti-social behaviour and environmental crimes.	AD Community Safety, AD Neighbourhood Services
	Enhancing the ability to identify early those at risk of becoming involved in, or the victim of, anti social behaviour and structuring preventative frameworks around these factors.	AD Community Safety

4.1.5 Performance Measures

National Indicators	Strategic Links			
	LAA	APACS	Survey	PSA
NI17: Perceptions of Anti-Social Behaviour.	X	X	X	23
NI21: Dealing with local concerns about anti-social behaviour and crime by the local council and the police.		X	X	23
NI22: Perceptions of parents taking responsibility for the behaviour of their children in the area.			X	
NI23: Perceptions that people in the area treat one another with respect and dignity.			X	

NI24: Satisfaction with the way the police and local council dealt with anti-social behaviour.		X		
NI25: Satisfaction of different groups with the way the police and local council dealt with anti-social behaviour.		X		
NI27: Understanding of local concerns about anti-social behaviour and crime by the local council and police.		X	X	
NI33: Arson incidents.	X	X		
NI49: Number of primary fires and related fatalities and non fatal casualties, excluding precautionary checks				

Local Indicators
Anti-Social Behaviour incidents recorded by South Yorkshire Police and the Safer Neighbourhood Teams.
NSU – Housing Notices served
NSU - Possession/Suspended Possession/Demotion/ Empty Dwelling/Interim Management Orders
NSU – selective licences
NSU – Interim / Full Injunctions & Undertakings on Terms
SNT/NSU - Service-user satisfaction
SNT/NSU - Anti Social Behaviour Orders
SNT/NSU Arrests
SNT/NSU Police Searches
SNT/NSU Intelligence Reports
SNT/NSU - Drugs seized (estimated monetary value)
SNT/NSU – Goods seized (estimated monetary value)
SNT/NSU – Closure Orders
SNT/NSU - Nuisance Vehicle warnings given
SNT/NSU - Nuisance Vehicles seized
SNT - Hours spent patrolling
SNT - Notices Served for Non Valid Tax Discs
SNT – Dispersal areas
SNT - Alcohol seized (estimated monetary value)
SNT - Non-Environmental Fixed Penalty Notices
SNT - Environmental Fixed Penalty Notices (graffiti, litter, fly tipping)
Anti Social Behaviour Warning Letters
Acceptable behaviour contracts agreed
Referrals to the YISP
The percentage of all tenants, or a representative sample of council tenants stating that they are satisfied with the overall service provided by their landlord when surveyed (Berneslai Homes survey).
Satisfaction of council housing tenants with opportunities for participation in management and decision making in relation to housing services provided by their landlord (Berneslai Homes survey).

Wardens - Square Meters Graffiti Removed
Wardens - Incidents Fly Tipping Dealt With
Wardens - Needles Collected

4.2 Volume (Acquisitive) Crime

4.2.1 Background

Overall volume crime is reducing within the Borough, particularly vehicle crime and burglary; people are also feeling safer and more secure as a result. These are the results of a multi-agency approach to tackle the causes of crime and also to address offending in a more coherent way.

The challenge with these crimes is to sustain the reduced levels of offending, whilst getting the message across to the wider public that crime has significantly fallen.

4.2.2 Delivery Objective

Sustain low levels of acquisitive crimes (including domestic burglary, vehicle crime, robbery and theft) and strive to achieve further reductions.

4.2.3 Structures, Systems & Processes

The areas of structures and processes to be addressed in this area are:

- Review the tasking and coordination groups in place to address aspects of volume crime and ensure that appropriate linkages with the Safer Neighbourhood Teams.

4.2.4 Action Plan

Utilising the four-strand approach, our approaches and initiatives to be delivered in this area are:

	Action	Lead Responsibility
Prevention	Continued target hardening via the Keepsafe project in conjunction with Victim Support and the Stay Put Scheme.	Head of Strategy, Policy & Performance
	Use and distribution of personal target hardening equipment to vulnerable persons across the Borough and in recognised hot spot areas, including provision of sales of equipment at cost-price.	Head of Strategy, Policy & Performance
	Consideration of community-wide target hardening initiatives such as alleygates.	AD Strategic Housing, Head of Strategy, Policy & Performance

	Use of a variety of media to promote a crime reduction message.	Head of Strategy, Policy & Performance
	Guidance and advice provided by the Crime Reduction Officers.	District Commander
	Provide improvements to street lighting to act as a deterrent to crime.	AD Highways & Engineering
	Designing our crime and community safety problems on new estates and through regeneration programmes by considering issues such as providing: better overlooked space, off-road parking; road and footpath layouts.	AD Strategic Housing
	Providing improved security measures on individual homes as part of new and regeneration housing programmes, such as better external security, alarms and TV linked door entry systems.	AD Strategic Housing
	Advice given by Crime Reduction Officers in order to design out crime either at the planning phase or retrospectively.	District Commander
	Use of No Cold Calling Zones in conjunction with BMBC Trading Standards and the Safer Neighbourhood Teams.	AD Regulatory Services, AD Community Safety
Enforcement	Full use of enforcement powers available to all partner agencies.	District Commander / AD Community Safety
	Use of 'trap vehicles' to catch vehicle crime offenders.	District Commander
	Use of CCTV and ANPR (Automatic Number Plate Recognition) technology to identify and catch offenders.	District Commander
Rehabilitation of Offenders	Personal visits and correspondence with known offenders.	District Commander

Support for victims and witnesses	Support victims via Victim Support.	Victim Support Barnsley Manager
	Provide support to Neighbourhood Watch in order to continue to expand use of Neighbourhood Watch schemes.	Head of Strategy, Policy & Performance

4.2.5 Performance Measures

National Indicators	Strategic Links			
	LAA	APACS	Survey	PSA
NI15 Serious violent crime rate		X		23
NI16 Serious acquisitive crime rate		X		23
NI20: Assault with injury crime rate.	X	X		25
NI28 Serious knife crime rate		X		
NI29 Gun crime rate		X		23

Local Indicators
Number of recorded Domestic Burglaries.
Number of recorded Theft of Motor Vehicles.
Number of recorded Theft from Motor Vehicles.
Number of recorded Robberies.

4.3 Drug and Alcohol Misuse

4.3.1 Background

The Drug and Alcohol Action Team (DAAT) works to reduce drug and alcohol use and the resultant harm for individuals, families and communities by commissioning effective treatment services and working in partnership with other relevant agencies and voluntary sector providers.

The national framework for this work is the national PSA25 'To reduce the harm caused by alcohol and drugs' and PSA14 'Increase the number of children and young people on the path to success', and the two national strategies 'Drugs: Protecting Families and Communities, 2008', and 'Safe. Sensible. Social. 2007 (Alcohol)'. Drug treatment is required to be effective (by retaining service users for a minimum of 12 weeks) to maximise the opportunities for a sustainable positive outcome.

The 2007 Needs Assessment, together with the Strategic Assessment, informed the 08/09 Drug Treatment Plan and the future development of treatment services. Work is underway to extend services to those geographical areas identified as having unmet need and to develop multi-agency delivery teams. Although more than 1,000 drug users accessed services in 07/08, the needs assessment identified a further 627 'treatment naïve' problematic drug users.

Joint funding from PCT & BMBC resources the commissioning of adult alcohol treatment services. The aim is to increase early interventions to reduce the harm caused by alcohol and to maximise the effectiveness of all alcohol treatment services.

4.3.2 Delivery Objective

Reduce the harm that drugs and alcohol misuse causes individuals, families and communities.

4.3.3 Structures, Systems & Processes

The areas of structures and processes to be addressed in this area are:

- Since its inception in 2005, the Drug Intervention Programme has provided a portal to treatment for drug misusing offenders, resulting in a reduction in offending for those accessing services¹. The contracted provider has been commissioned to provide an additional service in 2008/09 for stimulant users, as drug testing has shown a significant increase in stimulant use in Barnsley in 2007.

¹ Sheffield Hallam University 2007

- Robust commissioning of an effective integrated treatment service for both drug and alcohol users will be fundamental to the successful outcomes of the DAAT, but the wider communities, carers and partnership work will complement and support treatment in increasing community safety, individual health improvements and community re-integration.
- Providing opportunities and services for user and carer support and inclusion in service development.
- The C&YP Needs Assessment, which confirmed the prevalence of cannabis and alcohol as drugs of choice for young people in Barnsley, has informed the 08/09 Treatment Plan for Children and Young People.
- The imminent Integrated Youth Support Strategy should ensure that substance misuse treatment, information, advice and guidance is part of the holistic response to the needs of young people and their carers. The DAAT will work to ensure a smooth transition from young people's to adult services where this is required.
- The DAAT commissioned a piece of research from Barnsley Black and Ethnic Minorities Initiative (BBEMI) which identified that there was wide-scale ignorance about substance misuse services among the ethnic minority community. The recommendations of this report will be addressed, including providing information in relevant languages and interpretation services when required. The DAAT will also respond to recommendations arising from the forthcoming HCC/NTA review into diversity.

4.3.4 Action Plan

Utilising the four-strand approach, our approaches and initiatives to be delivered in this area are:

	Action	Lead Responsibility
Prevention	Commission effective drug and alcohol services for adults and young people.	DAAT Chair / DAAT Manager
	Increase numbers of substance users in effective treatment.	DAAT Chair / DAAT Manager
	Ensuring there is improved access to services, especially by vulnerable groups.	DAAT Chair / DAAT Manager
	Working with C&YP services to provide informed and user friendly substance misuse treatment, advice and guidance.	DAAT Manager / C&YP Rep
	Continue to work to increase responsible alcohol retailing and reduce alcohol related offending.	ED Customer Services & N'hoods / SYP

		District Commander
Enforcement	Reduce drug and alcohol related crime and anti-social behaviour through the effective and appropriate use of available enforcement powers.	SYP District Commander
	Target the influence of alcohol and illegal substances on behaviours likely to cause alarm harassment and distress at a local level.	SYP District Commander
Rehabilitation of Offenders	The Drug Interventions Programme will continue to target drug misusing offenders to reduce re-offending and drug misuse.	DAAT Chair / DAAT Manager
	Continue to work with Supporting People to develop appropriate services for substance users.	DAAT Chair / DAAT Manager
	Improve access to treatment and information, especially by BME communities retention in treatment and planned discharge from treatment.	DAAT Chair / DAAT Manager
Support for victims and witnesses	The DAAT will promote opportunities and services for user and carer support and their inclusion in service development, to ensure that services developed are responsive to need, accessible and used.	DAAT Chair / DAAT Manager
	Reduce the harms caused to the health and well being of both individuals and communities by reducing use of illegal drugs and alcohol.	DAAT Chair / DAAT Manager

4.3.5 Performance Measures

National Indicators	Strategic Links			
	LAA	APACS	Survey	PSA
NI38: Drug related (Class A) offending rate.		X		25
NI39: Alcohol harm related hospital admission rate.				25
NI40: Drug users in effective treatment.	X			25
NI41: Perceptions of drunk or rowdy behaviour as a problem.		X	X	25
NI42: Perceptions of drug use or drug dealing as a problem.		X	X	25
NI115: Substance misuse by young people				14

Local Indicators
Drug users recorded as being in effective treatment.
Retention and care planned discharge.
Individuals leaving the treatment system in an effective way.
Drug related deaths.
Number of primary care practices who are delivering primary care based treatment with a commissioned service model.
Number of offenders drug tested, the percentage of these offenders having required assessment, and the percentage of these offenders entering the treatment system.
Number of young people accessing treatment services.
Numbers of young offenders being assessed for substance misuse needs within five days.
Number of young offenders in need of services accessing them within ten days.
Percentage of schools reaching Healthy Schools targets (including substance use in PSHE).
Reaching waiting time targets for all substance misuse services.

4.4 Hate and Hidden Crime

4.4.1 Background

It is estimated that 3.6% of the 222,000 population of Barnsley is from a Black and Minority Ethnic background. This proportion has increased in recent years as more migrant workers and refugees choose to live and work in Barnsley. Furthermore we have a small asylum seeker and a transient minority ethnic population who are also targeted. In 2006-07 Barnsley had 257 incidents of racism or incidents motivated by religious views reported, although this is known to be greatly unrepresentative of the true scale of the problem.

The proportion of the population from an LGBT background in Barnsley is unknown (although nationally this is estimated to be around 6%), and offences against these groups are even more 'hidden' as often persons are unwilling to report incidents fearing that their confidentiality will be compromised and they could be 'outed'. In 2006-07 there were only 17 recorded incidents, which illustrates the scale of under-reporting.

Vulnerable adults are also victims of hate and hidden crimes that can occur behind closed doors and be motivated by hate driven by the victim's age or disability.

These hate and hidden crimes are important issues directed not just at individuals, but also at groups who can often feel the most isolated and vulnerable in our society. It is important that these crimes are dealt with effectively and sensitively with a view to:

- Increase the awareness and reporting of Hate and Hidden crimes.
- Address victimisation issues.
- Provide appropriate support to victims of Hate and Hidden crimes.
- To work on changing attitudes intolerance and perceptions.
- To reduce incidents of hate crimes across the Borough.

4.4.2 Delivery Objective

Increase the awareness and confidence in reporting of Hate and Hidden Crimes by providing appropriate support to victims, whilst also addressing discrimination by striving to change attitudes, perceptions and intolerance.

4.4.3 Structures, Systems & Processes

The areas of structures and processes to be addressed in this area are:

- Explore the possibility of having one forum to coordinate all aspects of hate crime work.
- The Multi-Agency Panel (MAP) currently coordinates efforts to tackle racism in Barnsley.

- The Barnsley Partnership Against Transphobia and Homophobia (B-PaTH) coordinates efforts to tackle homophobic incidents in Barnsley, and the LGBT staff forum will help to influence partner organisations by providing guidance on diversity policies.
- Work to protect vulnerable adults from crime is an area that requires a renewed focus.
- Hate and Hidden crimes need to be continually monitored via a database and reported to respective agencies in order to keep them informed and take appropriate action.
- Produce quarterly and annual reports monitoring hate crimes and reporting on trends and outcomes.

4.4.4 Action Plan

Utilising the four-strand approach, our approaches and initiatives to be delivered in this area are:

	Action	Lead Responsibility
Prevention	Working with Schools and other agencies on changing attitudes, intolerance and perceptions across the Borough.	Principal Hate & Hidden Crime Officer
	Log and record all incidents of hate crimes in order to monitor trends in crime types, victim and offender profiles, and time and locality patterns in order to direct preventative measures.	Principal Hate & Hidden Crime Officer
	Creation and delivery of LGBT training/awareness sessions to statutory and voluntary sector.	Principal Hate & Hidden Crime Officer
	Deliver training for staff, ward members, and other voluntary and statutory agencies for raising awareness and to gain an understanding of the different cultures and lifestyles in Barnsley.	Principal Hate & Hidden Crime Officer
Enforcement	Work to ensure that appropriate enforcement action is taken where perpetrators of Hate and Hidden crimes are known.	Det Insp, Public Protection Unit
	Work with other relevant agencies such as Barneslai Homes or Social Services who are able to take appropriate enforcement action.	Principal Hate & Hidden Crime Officer

Rehabilitation of Offenders	Explore the opportunities to work with young perpetrators through the YOT.	Principal Hate & Hidden Crime Officer
Support for victims and witnesses	Work with partner agencies such as BBEMI and Victim Support to ensure delivery of services to victims of hate crimes.	Principal Hate & Hidden Crime Officer
	Hold casework conferences for hate crime incidents in order to review the actions of individual agencies and the responses given to the victim.	Principal Hate & Hidden Crime Officer
	Increase the awareness and reporting of Hate and Hidden crimes through appropriate promotional materials and initiatives.	Principal Hate & Hidden Crime Officer

4.4.5 Performance Measures

National Indicators	Strategic Links			
	LAA	APACS	Survey	PSA
NI35: Building resilience to violent extremism.		X		26
NI36: Protection against terrorist attack.		X		26

Local Indicators
Numbers of recorded hate crime incidents by type.
Numbers of individuals accessing victim support services as a result of a hate crime.
Numbers of hate crimes reaching court and proportion of those resulting in sentencing.
Number of schools visited, number of awareness raising sessions, number of children and young people attending
Number of staff, ward members and other voluntary and statutory agencies trained/awareness raised.
Number of young perpetrators worked with.
Number of BME victims supported through agencies.
Number of LGBT awareness sessions delivered.

4.5 Domestic Abuse and Sexual Violence

4.5.1 Background

Domestic Abuse accounts for a quarter of all violent crime in Barnsley. Because Domestic Abuse is a hidden crime, monitoring levels has historically been problematic. During the period April 2006 and December 2007 there were 2039 incidents against women and 484 incidents against men. Domestic Abuse costs on average, £434 per year per head of population².

Although significant progress has been made to address the issues surrounding Domestic Abuse, It is important that measures are taken to increase confidence in reporting incidents and provide a co-ordinated community approach to supporting victims and their families. It is also known that victims will be subject to many more offences that go unreported; therefore this remains a 'hidden' crime.

4.5.2 Delivery Objective

Increase confidence amongst victims in reporting incidents and provide a coordinated community approach to supporting victims and their families, whilst ensuring swift and effective action is taken against perpetrators and that perpetrators are encouraged to seek help.

4.5.3 Structures, Systems & Processes

The areas of structures and processes to be addressed in this area are:

- Co-ordination of local domestic abuse interventions is the responsibility of the Barnsley Domestic Abuse Forum.
- Co-ordinating Multi-Agency Risk Assessment Conferences (MARACs) for high risk cases of domestic abuse.
- Provision of an ISVA (Independent Sexual Violence Advocate) to provide direct support to victims of sexual abuse identified through MARAC process and self referral via BSARCH (Barnsley Sexual Abuse Rape Crisis Helpline)
- Provision of an IDVA (Independent Domestic Abuse Advocate) to provide direct support to victims of Domestic Abuse identified through the MARAC and also self referrals via Victim Support Barnsley.
- Evaluating the IDVA service and implement recommendations.
- Identifying gaps in children services via the Sub Group of the Safeguarding Children Forum.
- Explore different partner agencies use of Paloma software to monitor and track domestic abuse cases reviewed at MARACs.

² Brand, Sam and Richard Price (2000) The Economic and Social Costs of Crime. Home Office Research Study 217. (London: Home Office).

- Explore options for standard-risk victims to be referred to a similar forum to the MARAC.
- Review terms of reference and multi-agency protocol after six months.

4.5.4 Action Plan

Utilising the four-strand approach, our approaches and initiatives to be delivered in this area are:

	Action	Lead Responsibility
Prevention	Maintaining temporary safe accommodation to victims fleeing Domestic Abuse (Refuge places).	Principal Hate & Hidden Crime Officer
	Maintaining target hardening for victims' property damaged by Domestic Abuse, through initiatives such as Sanctuary, Keepsafe and Skyguard initiatives.	Principal Hate & Hidden Crime Officer
	Ensuring the appropriate distribution and promotion of the Domestic Abuse Services Directory.	Principal Hate & Hidden Crime Officer
	Developing and delivering Domestic Abuse education in schools and youth clubs through the Domestic Abuse Education Pack.	Principal Hate & Hidden Crime Officer
	Delivering of Domestic Abuse training (including LGBT and straight men issues) to front-line staff and managers across agencies/departments that are likely to deal with Victims of Domestic Abuse.	Principal Hate & Hidden Crime Officer
	Closer involvement with SNTs and targeting of domestic abuse hotspots with leafleting etc.	Ch Insp Partnerships
	Developing processes to ensure that where a victim of domestic abuse doesn't want to co-operate, that the agency that has a good relationship with the victim maintains contact.	Principal Hate & Hidden Crime Officer
	Encourage joint agency visits to victims and their families who are difficult to reach.	Principal Hate & Hidden Crime Officer
	More integration of safeguarding vulnerable adults.	Principal Hate & Hidden Crime Officer
	Helping partner agencies with development of domestic abuse policies and protocols.	Principal Hate & Hidden Crime Officer
	More aggressive pro-active campaign targeting perpetrators and victims via leaflets, posters and media services.	Principal Hate & Hidden Crime Officer

	Analysing the referral process of agencies to encourage more referrals to other specialist agencies.	Principal Hate & Hidden Crime Officer
	Victims experiencing alcohol/substance misuse issues and domestic abuse to be referred onto appropriate support services from MARAC via IDVA.	Principal Hate & Hidden Crime Officer
	Review repeat cases at MARACs to evaluate whether anything more could have been done to prevent repeats or whether there are interventions that can prevent them happening in future	Principal Hate & Hidden Crime Officer
	More involvement with business sector to raise a greater awareness of the cost of domestic abuse to industry and how organisations can support their employees.	Principal Hate & Hidden Crime Officer
	Support to BME community by raising awareness of issues and interventions of domestic abuse.	Principal Hate & Hidden Crime Officer
	Common risk assessment for all agencies involved in domestic abuse front line services	Principal Hate & Hidden Crime Officer
	Provide different coloured bottles in toilets for pregnant women to discretely reveal whether they are experiencing abuse from their partner.	Principal Hate & Hidden Crime Officer
	Continuing to raise awareness of Domestic Abuse amongst health care professionals to enable early intervention in the community.	Principal Hate & Hidden Crime Officer
Enforcement	Having a proactive approach to the enforcement of domestic incidents.	Principal Hate & Hidden Crime Officer & Det Insp, Public Protection Unit
	Undertaking timely visits to known repeat offenders.	Det Insp, Public Protection Unit
	Promote domestic abuse training to all magistrates, prosecutors and CJS staff directly involved with domestic abuse victims and perpetrators.	Principal Hate & Hidden Crime Officer
	Ensuring that perpetrators of Domestic Abuse can be removed from joint tenancy agreements of local authority housing	ASB Enforcement Coordinator

Rehabilitation of Offenders	Secure the delivery of perpetrator programmes.	Principal Hate & Hidden Crime Officer
Support for victims and witnesses	Providing direct support to victims of domestic abuse identified through the MARAC.	Principal Hate & Hidden Crime Officer
	Maintaining routine screening for Domestic Abuse by Health Visitors at birth visit and at routine assessments.	Principal Hate & Hidden Crime Officer
	Support to women and children with no recourse to public funds	Principal Hate & Hidden Crime Officer
	Continuing to deliver counselling services to victims of Domestic Abuse.	Principal Hate & Hidden Crime Officer

4.5.5 Performance Measures

National Indicators	Strategic Links			
	LAA	APACS	Survey	PSA
NI26: Specialist support to victims of a serious sexual offence.		X		23
NI31: Re-offending rate of registered sex offenders.		X		23
NI32: Repeat incidents of domestic violence.		X		23
NI34: Domestic violence – murder		X		23

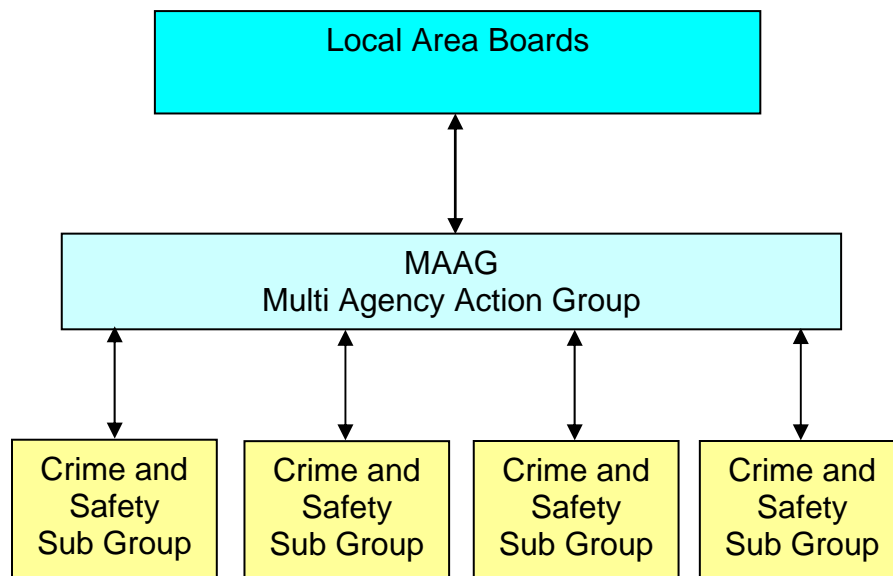
Local Indicators
Number of refuge places.
Number of properties targeted hardened for domestic abuse.
Number of domestic abuse directories distributed.
Number of education packs distributed and number of children and young people engaged with.
Number of front line staff trained on domestic abuse (including LGBT and straight men issues) from all partner agencies.
Number of victims refusing permission for joint agency visits.
Number of joint agency visits (and identification of which agencies in attendance).

Number of leaflets distributed to hot spots.
Number of agencies given help to develop policy and protocol.
Number of perpetrators visited and/or written to.
Number of referrals from each agency to other agencies.
Number of referrals to Alcohol Services.
Number of SLA to include domestic abuse clause.
Monitor representation from all appropriate services at MARAC meetings.
Number of training sessions to BME community.
Inclusion in domestic abuse training material, LGBT and straight men issues and amount of sessions delivered.
Number of agencies using common risk assessment.
Numbers attending perpetrator programmes.
Number of victims supported through MARAC with IDVA, ISVA and other agencies.
Number of pregnant women asked if they are suffering domestic abuse and proportion answering positively.
Number of women supported who have no recourse to public funds.
Number of victims of domestic abuse supported through counselling.

4.6 Community Engagement and Participation

4.6.1 Background

To increase the connection between neighbourhood community safety issues and policing resources, a structure including both priority setting and accountability is firmly embedded across the Borough. Priorities are determined by feeding up information from the individual Crime and Safety Groups, through the Multi-Agency Action Groups to the Area Boards. This three-tier model is replicated at each of the nine Safer Neighbourhood Teams and has been further enhanced by the development of the Safer Communities Forum.



This three-tier model is replicated at each of the nine Safer Neighbourhood Areas.

The CSSGs are local groups based on Ward or Neighbourhood boundaries. Wherever possible these build upon existing arrangements or groups in communities. They receive information regarding current community safety issues within the locality and are held on a monthly basis. Their membership includes local community representatives (e.g. reps from Tenants and Residents Associations (TARA), Neighbourhood Watches, residents groups, schools, businesses and other community and voluntary sector groups), service providers, local residents and local ward Councillors. The Police Beat Manager and/or PCSO for that area will also attend the meeting and give feedback on current issues and progress on priorities. The information received at these meetings will be used to determine local SNT priorities. Community Chairs or representatives from these groups attend the Multi-Agency Action Group on a monthly basis and will appraise the Group of their priority issues for consideration.

As at 1st December 2007 there are 31 CSSGs in operation across the borough.

The Safer Communities Partnership hold a bi-monthly CSSG Chair/Rep Liaison Group which enables the partnership and Safer Communities Forum to engage with these groups and to enable the groups to come together and share best practice and develop new ideas.

Reports from all of the CSSGs in an SNT area are considered at monthly MAAGs. Each SNT runs its own MAAG meeting on a monthly or six weekly basis. These groups comprise of representatives from various agencies as well as the Chairman or representatives from the CSSG and other community and voluntary sector representatives. The MAAGs will collate all emerging crime and safety issues in that area and agree actions to tackle local problems. They also endorse a quarterly service plan for their priority issues which is presented to the Area Board then to Area Forum. All nine Safer Neighbourhood Teams have an operational MAAG meeting. The actions and activities agreed by MAAGs to tackle local issues are fed back to CSSGs via the Chairman or nominated representative attending who attends the MAAG thus ensuring local people are kept informed of action being taken.

Area Boards and Area Forums are part of the councils democratic process. There are 9 Area Boards across the borough. Area Boards play a crucial oversight role within the three tier model of engagement. Service Delivery Plans detailing community and other demand priorities are presented to Area Boards on a quarterly basis for approval. Performance updates are also given. These Plans and updates from the previous quarters are presented at Area Forums. These are monthly local council meetings held in public. The community are able to clearly see what priorities have been set, how priorities have been arrived at and what progress has been made against those priorities. This three-tier approach to community engagement provides an accountable and transparent infrastructure where communities can easily access, influence and shape their local policing priorities.

The Safer Communities Forum is a new development of the Three Tier Structure. This enables the Community and Voluntary Sector to comment on and develop work being carried out on Community Safety and Community Engagement by partner agencies in the Barnsley area. A community representative from this group is a member of the Safer Communities Partnership Executive Committee and therefore has a direct link into the strategic decision making processes. Feedback from the Executive Committee is given to members of this forum who share relevant and useful information with local groups and MAAGs. This group held its inaugural meeting in September 2007 and is currently developing a workplan. The meetings are held on a six weekly cycle to co-ordinate with the Executive Committee meetings.

A number of survey based consultation methods are also undertaken by the Council and other responsible authorities to measure public perception of crime and anti-social behaviour. These have formed part of the strategic assessment and inform this plan. The Councils current consultation methods are currently under review in order to have a more coherent approach for the future based around the New Place Survey.

Each Safer Neighbourhood Team has an Engagement Strategy incorporating the three tier structure. However, there are many other avenues of engagement such as Neighbourhood Watch, Pubwatch, Rural Watch, Police Surgeries and Councillor Walk-a-bouts, Area Boards, Area Conferences, Reassurance and Visibility Days, Galas, targeted campaigns and multi-agency operations such as Operation Blight and Operation Beat Blitz, newsletters and information on Websites, engagement with young people, the elderly and BME groups. All information gleaned from these and other events is fed into the three-tier structure.

The three tier structure of engagement detailed in the sections above enables the partnership to consult with its communities about crime and disorder issues in the area at a variety of different levels. Communities themselves are actively engaged in partnership working and are directly involved in priority setting. These structures ensure that the partnership is accountable and transparent to the public. Community priorities highlighted through this structure have formed part of the strategic assessment and have informed this plan.

In addition to the structures and engagement processes already outlined the strategy group will hold at least one public meeting a year. These *face the people* meetings are included as part of the work in delivering the Respect Agenda. Senior representatives of the partnership will meet the public to hear their issues and let them know about what action that they have taken to tackle them. It is important that communities meet with the key decision makers in the partnership and are able to raise their concerns with them.

4.6.2 Delivery Objectives

Provide accessible and appropriate opportunities for residents and community groups to access community safety services, and ensure that local priorities are taken into account in service delivery decisions.

4.6.3 Structures, Systems & Processes

The areas of structures and processes to be addressed in this area are:

- Broadening opportunities for the public to access and influence services using a variety of different access points which cut across the different partner agencies.

- Support and proactively promote access to service of those most excluded or vulnerable within our communities.
- Ensure local priorities are reflected in service delivery and that appropriate frameworks are developed to account for decisions taken.

4.6.4 Action Plan

Utilising the four-strand approach, our approaches and initiatives to be delivered in this area are:

	Action	Lead Responsibility
Prevention	Identification of gaps in provision with regard to CSSGs arising from the Strategic Assessment, SNT priorities and communities requests. The development of CSSGs in these area's will be prioritised accordingly.	Customer Service & Communications Officer, Tasking Officers
	Ensuring that the community and voluntary sector are engaging within the three tier structure and contributing to the intelligence picture	Customer Service & Communications Officer
	Development of Neighbourhood Watch schemes in hotspot areas of crime and anti-social behaviour particularly Central SNT and Dearne area's.	Neighbourhood Watch Co-ordinator
	Ensuring CSSGs are inclusive of a cross sectional neighbourhood perspective of crime and safety	CSSGs, Tasking Officers, Engagement Officers, Customer Service & Communications Officer
	Engagement with the Business Sector and Chamber of Commerce to develop initiatives to combat business crime and promote closer working relationships	Customer Service & Communications Officer
	Ensuring effective and consistent operation of SNT Multi-Agency Action Meetings (MAAGs) to ensure effective problem solving	Customer Service & Communications Officer
	Engagement of the SNT Service with the neighbourhood management initiatives will ensure	AD Community Safety

	that community engagement is maximised and prevention opportunities are acted upon.	
	Ensuring SNT MAAG priorities include large amounts of community intelligence that will enable problem solving and early identification of hotspot areas	Tasking Officers
	Engage with Young people with substance misuse prevention messages using FRANK campaign.	Communities and Families Officer - DAAT
	Using SNT three tier structure of engagement to ask police, partners and local communities to identify drug issues of concern and potential solutions and to ensure there is a joined up, visible and local response to tackle and prevent drug problems in neighbourhoods.	Communities and Families Officer - DAAT
	Co-ordination & development of the Safer Communities Forum and its volunteer members in order that it represents the Voluntary and Community Sector interests in the work the CDRP and work being carried out on community safety and community engagement	Customer Service & Communications Officer
Enforcement	To promote the scale and use of enforcement powers undertaken by all partner agencies in order to dispel any views that enforcement powers are underused or ineffective.	Customer Service & Communications Officer
	To give feedback to CSSGs on enforcement action taken on a monthly basis.	Safer Neighbourhood Team Officers
Rehabilitation of offenders	N/A	
Support for victims and witnesses	Support of CSSG chairs and representatives to participate in 'three tier' engagement structure. Where operating problems arise intervening to resolve these.	Tasking Officers, Engagement Officer Customer Service and Communications Officer

	Training for CSSG chairs and representatives in order to improve their abilities to be community leaders	Customer Service and Communications Officer
	Expansion of three tier model of engagement to extend to capturing communities not defined by geography especially those that are harder to reach or hear.	AD Community Safety Customer Service and Communications Officer
	The BME community have requested a Crime and Safety Forum for their community. A CSSG will be formed in response to this request with the aim of increasing engagement between the Police, SNT and the BME community	Customer Service and Communications Officer, Tasking Officers, BBEMI

4.6.5 Performance Measures

National Indicators – see the perception measures in the Anti-Social Behaviour section.

Local Indicators
Numbers of CSSGs established.
Number of Neighbourhood Watch schemes established.
Number of community priorities identified through MAAG meeting.
Service Delivery Plans including community priorities produced on quarterly basis.
SNT response to calls to Golden Line within 24 hours of receipt.

4.7 Communication to Improve Public Reassurance

4.7.1 Background

A core focus for all services dealing with anti social behaviour has been to promote positive perceptions of the Borough in terms of community safety. Significant inroads have been achieved in reducing the impact of the fear of crime both at borough-wide and neighbourhood levels. The key partners recognise the continued importance of keeping the public informed about activity to address crime and anti social behaviour and maintain some element of perspective and context as regards the extent of problems.

To further reduce the fear of crime and to raise awareness of the diverse work of the partnership and its constituent partner agencies a range of communication mechanisms and promotional opportunities are undertaken. It is the aim of the partnership over the period of this plan to continue to develop a coordinated and consistent approach to media and communication incorporating all partners and our community and voluntary sector colleagues.

We will seek positive press coverage from local media at every opportunity and look to forge positive working relationships with media and communication departments of our partners, other agencies and local media organisations in order to ensure our approach is consistent and meaningful. We will continue to work to reach marginalised and harder to reach groups through local networks such as BBEMI, Age Concern, Youth Service and other community and voluntary sector groups. We will continue to promote the work of our Safer Neighbourhood Teams and the Neighbourhood Safety Unit in the local media and radio and through the use of newsletters and publications such as Barnsley Matters, Cleaner, Greener, Safer Bulletins and other local publications. On-line opportunities will be used regularly utilising both the Safer Barnsley website and the South Yorkshire Police SNT Website.

4.7.2 Delivery Objective

Have a positive, coordinated approach to marketing and communication in order to improve perceptions of crime and anti-social behaviour, and improve public reassurance.

4.7.3 Structures, Systems & Processes

The areas of structures and processes to be addressed in this area are:

- To review and re-issue the SCP Partnership Consultation and Communication Strategy to increase reassurance and inform stakeholders of activity.
- To hold quarterly partnership communication meetings.

- To prepare and present quarterly communication reports to the SCP Executive Committee.
- To promote the Partnership and the work of individual partner agencies, to externally showcase best practice by utilizing all appropriate forms of media and communication.
- To develop, promote and uphold customer service standards for the Division, and ensure that mechanisms exist to monitor and measure the performance of the service in respect of these.
- Identify, devise, plan, launch and promote new initiatives to promote community safety and influence public opinion. A range of local media will be used to do this.

4.7.4 Action Plan

Utilising the four-strand approach, our approaches and initiatives to be delivered in this area are:

	Action	Lead Responsibility
Prevention	To provide crime reduction advice through appropriate communication channels.	Customer Service & Communications Officer, Crime Reduction Officers
	To further raise awareness of Safer Neighbourhood Teams through improved communication with local communities	Customer Service & Communications Officer Tasking Officers
	Use national platforms – National Tackling Drugs Week and Tackling Drugs Changing Lives Awards – to increase confidence in the response to drug and drug related crime. Communities will then be fully informed and engaged in work being done locally to make their communities safer	Communities and Families Officer - DAAT
	Maintain an up-to-date website: saferbarnsley.co.uk	Head of Strategy, Policy and Performance
	Develop communication campaigns to run alongside national campaigns on publicising enforcement action. This will enable communities to be more informed and engaged in work being done to make their communities safer	Communities and Families Officer - DAAT
	Utilising the resources of borough wide Voluntary Organisations to communicate positive messages in relation to community safety	Customer Service & Communications Officer

	By providing SNT service delivery reviews to all nine Area Boards at quarterly intervals, feedback reports at all area forums and providing formal feedback of activity to all Crime and Safety Sub Groups it is anticipated that the flow of information about problems and activity to address problems will enhance public reassurance.	Tasking Officers
	Ensure that all activity reported or communicated on community safety issues is representative of all partners in order to convey a coordinated and joined up response.	Customer Service and Communications Officer
	To ensure communication channels are open between the Safer Communities Forum, three tier structure and the Safer Communities Executive Committee	Customer Service & Communications Officer
	Actively work to increase the awareness and reporting of Hate and Hidden crimes through appropriate promotional initiatives.	Principle Hate Crime Coordinator
Enforcement	To promote the scale and use of enforcement powers undertaken by all partner agencies in order to dispel any views that enforcement powers are underused or ineffective.	AD Community Safety, AD Regulatory Services, ASB Enforcement Co-ordinator, AD Strategic Housing, Customer Service and Communications Officer
	SNT/NSU/ERU to provide quarterly enforcement activity updates.	Tasking Officers, ASB Enforcement Co-ordinator, ERU Manager, Customer Service and Communications Officer
	To promote success stories in the media of when enforcement powers have been used.	Tasking Officers, ASB Enforcement Co-ordinator, ERU Manager

Rehabilitation of Offenders	NSU to provide quarterly Family Intervention success ratings updates.	ASB Enforcement Co-ordinator
Support for Victims and witnesses	Continue to develop close working relationships with our community and voluntary sector colleagues in order to maintain the flow of quality information and intelligence.	Tasking Officers Customer Service and Communications Officer
	NSU to provide quarterly support and protection risk & action plan activity updates.	ASB Enforcement Co-ordinator

4.7.5 Performance Measures

Local Indicators
Number of Golden Line calls responded to within 24 hours of receipt.
10% of all users of SNT/NSU service users to be surveyed for customer satisfaction.
SNT MAAG meetings held on 4/6 weekly basis.
SNT production of Service Delivery Plans to Area Boards on quarterly basis.
Number of positive news articles compared to negative news articles.

4.8 Offender Management

4.8.1 Background

A key role of the CDRP is to reduce crime, a specific part of which is to stop offenders re-offending after they have served their sentence. In order to enable offenders to break the cycle of offending behaviour each individual needs to be assessed and offered appropriate intervention, both to accept responsibility for their crime, and equip them to make more socially responsible decisions in the future.

The Probation Service works with offenders over the age of 18 who have been sentenced by the Court to a community or custodial sentence. The work they undertake seeks to achieve the following:

- Protecting the public
- Reducing re-offending
- The proper punishment of offenders in the community
- Ensuring offenders' awareness of the effects of crime on the victims of crime and the public
- Rehabilitation of offenders

The intervention the Probation Service offers is largely undertaken by their own staff but 10% of their budget has to be spent on delivery by partner agencies.

In Barnsley the multi-agency group with strategic oversight of offender management for both adults and young offenders, is the Barnsley Offender Management Forum (BOMF). Its role is to ensure the seamless end-to end management of offenders, ensure appropriate services are in place for victims and witnesses and to protect the public from harm. The BOMF has strategic oversight for two significant initiatives, the Drugs Intervention Programme (DIP) and the Prolific and Priority Offenders (PPO) Initiative.

Another role of the CDRP is to reduce disorder. The Family Intervention Project seeks to address the underlying causes of Anti-Social Behaviour by challenging and supporting perpetrators of anti-social behaviour and their extended families to bring about positive changes in behaviour.

4.8.2 Delivery Objective

Provide appropriate provision for adult offenders to break their cycle of offending, whilst ensuring victims and witnesses are also supported.

4.8.3 Structures, Systems & Processes

The areas of structures and processes to be addressed in this area are:

- To secure funding and maintain effective partnership working to underpin the DIP and PPO programmes.
- To ensure that a “Premium Service” is offered by all partners to PPO’s and that there are effective pathways to treatment for offenders who misuse illegal drugs.
- To explore how community intelligence might assist with securing detection rates.
- To support the LCJB to achieve targets.
- To support restorative processes which lead to greater community cohesion.

4.8.4 Action Plan

Utilising the four-strand approach, our approaches and initiatives to be delivered in this area are:

	Action	Lead Responsibility
Prevention	Ensure appropriate probation referrals to the MARACs.	Senior Probation Officers
	To ensure drug intervention for all offenders in police cells testing positive by providing a prompt referral to the DIP Team.	DIP Manager
	Improve probation out-reach service to Mentally Disordered Offenders, including good multi-agency communication.	Senior Probation Officers
Enforcement	Increase the number of detections and convictions for violence.	District Commander
	Ensure breach action for community orders and licenses is taken quickly and brought to court within national standards, and to use the fast-track breach process for high-risk cases.	Senior Probation Officer, Courts
Rehabilitation of Offenders	Provide efficient access to local drug rehabilitation facilities.	Assistant Chief Officer, Probation
	Support the provision of effective treatment for alcohol dependency enabling fast, efficient access to alcohol treatment services.	Assistant Chief Officer, Probation
	Address the gap in supported accommodation for statutory offenders.	Probation Divisional Manager

	Provide support and guidance to released prisoners to gain basic skills to improve their reintegration into the community.	Assistant Chief Officer, Interventions
	Ensure Multi-Agency Public Protection Arrangements (MAPPA) is used for the appropriate offenders.	Probation Divisional Manager
	Ensure effective communication between Probation and the Police/Prisons through the use of VISOR.	Probation Divisional Manager
	Safeguarding victims and witnesses is an important challenge for the partners on the BOMF, ensuring offender management interventions include victim and witness support as an integral part.	BOMF Chair
Support for victims and witnesses	To increase the support offered to victims to prevent repeat victimisation.	Senior Probation Officer, Victims
	To ensure victims and witnesses are offered appropriate services and care by providing access to Victim Support and Court Witness Support services.	Senior Probation Officer, Victims
	The Probation Service will fulfil their requirements under the Victims Charter to ensure the wishes of victims of serious violence and sexual assault are heard and incorporated into release plans.	Senior Probation Officer, Victims

4.8.5 Performance Measures

National Indicators	Strategic Links			
	LAA	APACS	Survey	PSA
NI18: Adult re-offending rates for those under probation supervision.	X	X		23
NI30: Re-offending rate of prolific and priority offenders.		X		

Local Indicators
The percentage of victims who are contacted within eight weeks of an offender receiving 12 months or more of a serious sexual or violent offence.
The percentage of Tier 2 (where appropriate) and Tier 3, 4 and PPO cases in which OASys assessments were completed within the appropriate timescales.
The percentage of offenders in settled and suitable accommodation at the end of their order or license to be at least 70%.
The percentage of PPOs on license for a trigger offence that have a drug testing condition inserted into their license.

4.9 Youth Offending

4.9.1 Background

Although crime in Barnsley has fallen demonstrably in recent years, local concern about youth crime and Anti-Social Behaviour continues to feature prominently in local citizen's surveys and consultations.

Barnsley's Safer Communities and Children, Young People and Families Partnerships have been working towards achieving a balance of enforcement and prevention activities which address youth crime, supports the rehabilitation of young people by addressing key criminogenic risk factors, and through proactively targeting those children and young people identified as being at risk of becoming involved in more serious offending or anti-social behaviour. In addition, much has been done to promote Restorative justice approaches which give victims a voice in the youth justice process.

4.9.2 Delivery Objective

Reduce offending behaviour, including first-time offences, by young people through early intervention, diversion, engagement and support programmes.

4.9.3 Structures, Systems & Processes

The areas of structures and processes to be addressed in this area are:

- Prepare for implementation of new legislation introducing new generic youth justice order: Youth Rehabilitation Order (YRO).
- Implement risk assessment and risk management procedures in accordance with YJB Guidance: 'The Scaled Approach'.
- Implement YOT quality assurance plan to improve ASSET quality and compliance.
- Develop options for delivery of cognitive behavioural offending behaviour programmes across YOT service user groups.
- Explore options for expanding and extending restorative justice interventions across YOT service user groups.
- Work with key partners to improve assessment and referral systems to access accommodation for children and young people in the youth justice system.
- Establishing robust risk management procedures.

4.9.4 Action Plan

Utilising the four-strand approach, our approaches and initiatives to be delivered in this area are:

	Action	Lead Responsibility
Prevention	Partners including the YOT, Police/SNTs, Schools, Education, Youth Service, Voluntary sector and others have developed systems and procedures which pro-actively identify children and young people about whom there are concerns because of involvement in offending or other anti-social activities. Research has shown that effective early interventions can divert children and young people from the formal youth justice system and support them, and their families, in receiving appropriate help and support which addresses risk factors and maintains protective factors.	C&YP Rep
	Improve range, type and access to constructive leisure activities for children and young people.	C&YP Rep
	Improve the range of type and access to education, learning, training and employment opportunities for children and young people in the youth justice system.	YOT Manager / C&YP Rep
	The YISP receives referrals from agencies who are concerned about a young person's behaviour. YISP workers will then try to engage the young person and their family, assess their needs, and co-ordinate a multi agency panel to agree a holistic intervention plan which is then monitored on a regular basis to ensure goals are achieved.	YOT Manager / C&YP Rep
	The SSP has been piloted at Dearne High School and involves a Police Officer and Restorative Justice practitioner, working together to address issues such as truancy and exclusion, bullying and other forms of anti-social behaviour, and provide constructive conflict resolution responses to school based problems.	YOT Manager / C&YP Rep
Enforcement	Follow through breach action of non compliance as dictated by the Youth Justice Board National Standards.	YOT Manager

Rehabilitation of Offenders	One of the YOTs core remits is to reduce offending and re-offending by children and young people. It works with young people who have received some form of formal youth justice sanction, and focusing on those assessed factors most associated with an individual's offending behaviour, constructs programmes of intervention designed to reduce or minimize their impact. A key development in the near future will be the implementation of the Scaled Approach, a robust risk assessment and risk management framework which (again based on effectiveness research) will ensure that those young people who present the most risk receive the most comprehensive in intensive programmes of interventions addressing key risk factors such as: family related, education or employment related, and individual factors.	YOT Manager
Support for victims and witnesses	Develop range of accessible parenting courses/family support to parents/ carers of children and young people in the youth justice system through direct YOT provision and via partner agencies.	YOT Manager
	Contact the victims of all the young offenders sentenced to a Referral Order and offer them a restorative intervention.	YOT Manager

4.9.5 Performance Measures

National Indicators	Strategic Links			
	LAA	APACS	Survey	PSA
NI19: Rate of proven re-offending by young offenders.		X		23
NI43: Young people within the Youth Justice System receiving a conviction in court who are sentenced to custody.				
NI44: Ethnic composition of offenders on Youth Justice System disposals.				
NI45: Young offenders engagement in suitable education, employment or training.				
NI46: Young offenders access to suitable accommodation.				
NI111: First time entrants to the Youth Justice System aged 10 - 17		X		14

Glossary Annex

AD	Assistant Director
ALMO	Arms Length Management Organisation
ANPR	Automatic Number Plate Recognition
ASB	Anti-Social Behaviour
BBEMI	Barnsley Black and Ethnic Minority Initiative
BMBC	Barnsley Metropolitan Borough Council
BME	Black Minority Ethnic
BOMF	Barnsley Offender Management Forum
B-PATH	Barnsley Partnership Against Transphobia and Homophobia
BSARCH	Barnsley Sexual Abuse and Rape Crisis Helpline
C&YP	Children and Young People
CCTV	Closed-Circuit Television
CDRP	Crime and Disorder Reduction Partnership
CPS	Crown Prosecution Service
CSSG	Crime and Safety Sub Group
DAAT	Drug and Alcohol Action Team
ED	Executive Director
ERU	Environmental Regulatory Unit
IDVA	Independent Domestic Violence Advocate
ISVA	Independent Sexual Violence Advocate
LCJB	Local Criminal Justice Board
LGBT	Lesbian, Gay, Bisexual and Transgender
LIFE	Local Intervention Fire Education
LOMP	Local Offender Management Panel
MAAG	Multi-Agency Action Group
MAP	Multi Agency Panel
MARAC	Multi Agency Risk Assessment Conference
NSU	Neighbourhood Safety Unit
NTA	National Treatment Agency
PCSO	Police Community Support Officer
PCT	Primary Care Trust
PPO	Prolific and Priority Offender
PSA	Public Service Agreement
SNT	Safer Neighbourhood Team
SSP	Safer Schools Partnership
TARA	Tenants and Residents Association
VAB	Voluntary Action Barnsley
YISP	Youth Inclusion Support Programme
YJB	Youth Justice Board
YOT	Youth Offending Team
YRO	Youth Rehabilitation Order